

Microbiology Testing Solutions



Zhejiang Tailin Bioengineering Co., Ltd

No.2930 Nanhuan Road, Binjiang, Hangzhou, Zhejiang, China.

TEL: 0086-571-86589087

FAX: 0086-571-86689998

E-MAIL: marketing@tailingood.com

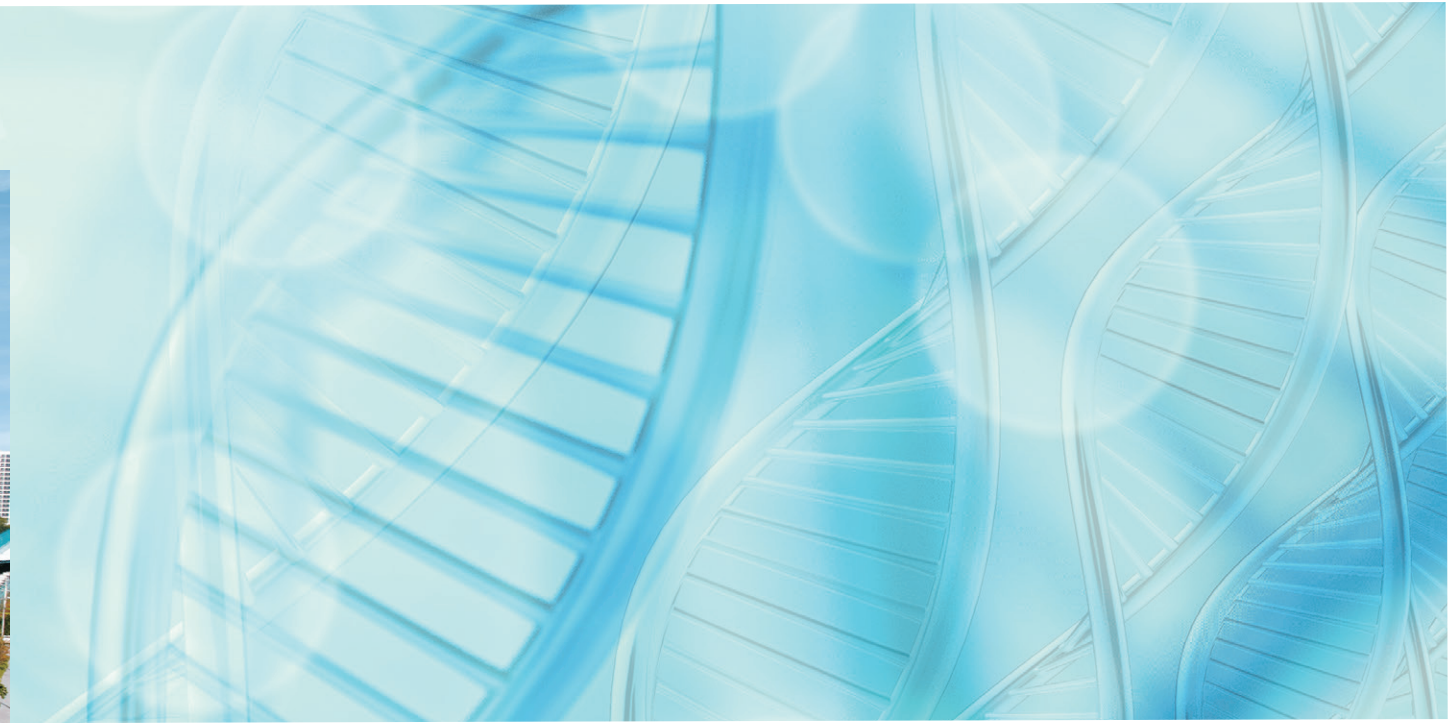
WEB: www.tailinscitech.com



@Tailin

@Tailin_official

@TAILIN



Tailin: Integrated Solution Provider in Life Science

Founded in 2002, Tailin is a leading company in the life science field.

Talin's core competency is technological innovation and strong manufacturing ability.

In order to provide the whole solutions for customers, we manufacture most of the critical equipment by ourselves including the aseptic isolator, containment isolator, VHPS decontamination system, glove leak tester, sterility test pump, and consumables.

Up to today, Tailin has got more than 300 Chinese patents and drafted many National and Industry standards in the name of the first author.

Tailin has nearly 1,000 employees, of which there are more than 200 R&D engineers, accounting for 20%.

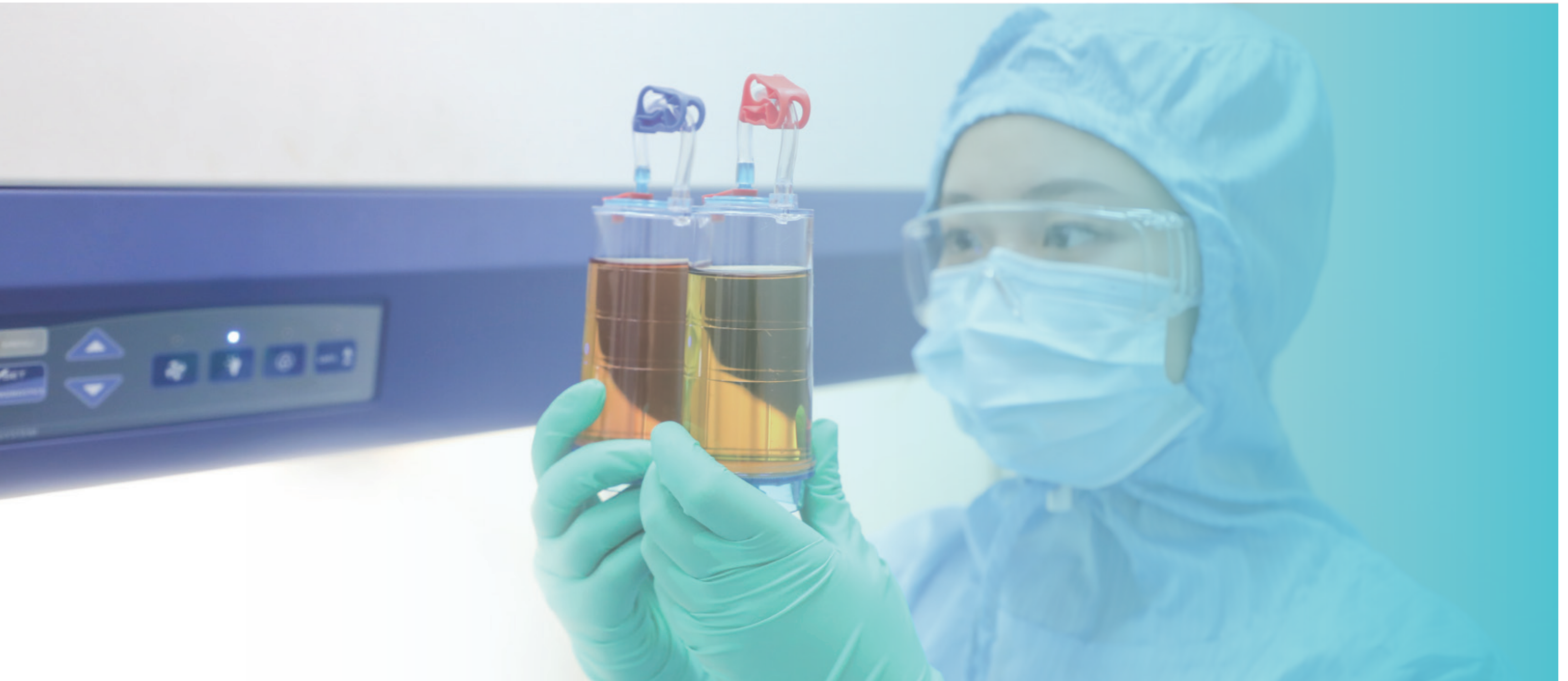
Furthermore, Tailin has experienced validation teams working closely with customers and developed qualification strategies based on regulations to guarantee fast approvals by the authorities.

Due to the high quality and excellent service, Tailin become a well-known company in the fields with high standard requirements such as biopharmaceutical, cell& gene therapy, P3 labs, manned space, etc.

Nowadays, Tailin has built a solid relationship with lots of famous multi-national pharmaceutical groups, laboratories, and institutes spread in more than 40 countries and territories in the world. In the future, Tailin will keep going all out to serve customers better and grow together with our partners.

CONTENTS

Sterility Test System	01	Filtration Membrane	39
Sterility Test Pump	03	PES Flat Membrane	41
Built-in Sterility Test Pump for Isolator	08	Reinforced PES Flat Membrane	43
Sterility Test Canister	11	Nylon Flat Membrane	45
Rapid Sterility Test System	14	MCE Flat Membrane	47
Accessories	15	Hydrophilic PVDF Flat membrane	49
Lactamases	16	Reinforced Hydrophilic PVDF Flat Membrane	51
		Nitrocellulose (NC) Membrane IVD Series	53
Microbial Limit Test System	19	Pretreatment Instruments	55
Microbial Limit Tester	23	Laboratory Blender	57
Microbial Limit Test Manifold	27	Gravimetric Diluter	57
Laboratory Pumps	28	Laboratory Homogenizer	58
Microbial Limit Test Funnels	29	Sterile Bags	59
Membrane Filters	32	Ampoule Opener	60
Membrane Dispenser	33	Aerosol-based Drug Sampler	60
Sterile Vacuum Filter Unit	34		
Automatic Colony Counter	37		



Sterility Test System

1. Sterility Test Pump
2. Built-in Sterility Test Pump for Isolator
3. Sterility Test Canister
4. Rapid Sterility Test System
5. Accessories
6. Lactamases

Sterility Test Pump

HTY-ASL02

- + Toughened and water-proof glass panel
- + Two pressure modes: Normal/*Pressure Alert
- + SOP function: store up to 300 test recipes
- + Support to input SOPs from PC
- + Powerful motor with digital current control technology
- + Speed memory function
- + Safety hood to avoid glove pinching
- + Water-proof pedal switch
- + Safety protection of over current, over voltage, over load and block

- Pump head automatically locked
- Max.300 test recipes storage
- Easy tube loading
- Timer function
- Fit for other brand canisters
- No electrical spark, explosion-proof

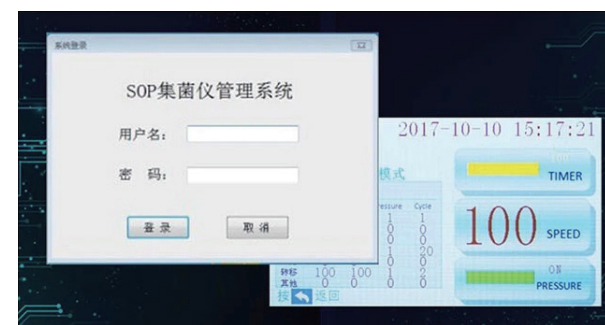
*The pressure alert mode is for Tailin canisters, it will alert the operator and automatically reduces the pump speed till to pressure returns to normal.



Technical Parameters

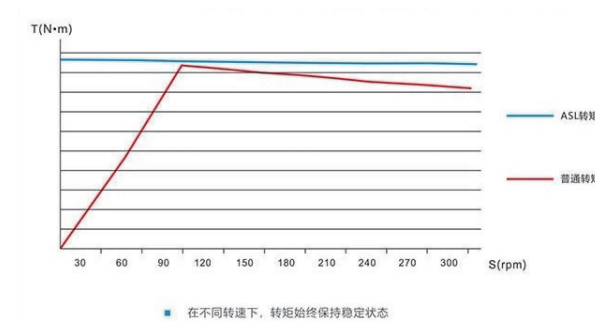
Power : AC95-260V/50-60Hz,120W	Net Weight: 20kg	Material: Stainless Steel
Screen: 4.3" Colorful LCD	Test Recipes: Up to 300 groups	Dimensions: 22.5x40.0x13.5cm
Ambient Temperature: 15-35°C	Speed: 1-300pm	Timer: 1-999S
Ambient RH: Below 70%		

Sterility Test Pump



SOP Mode

It can preset the test process and parameters, and store up to 300 recipes



Stable Speed

Running at stable speed to ensure the reliable filtration

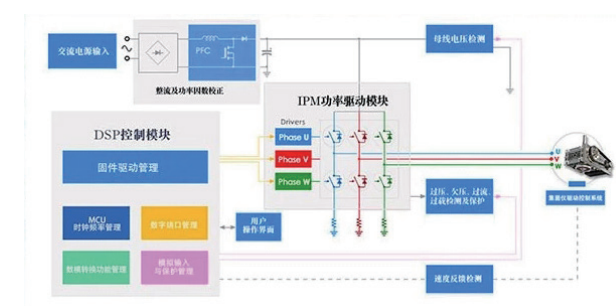


Easy Tube Loading



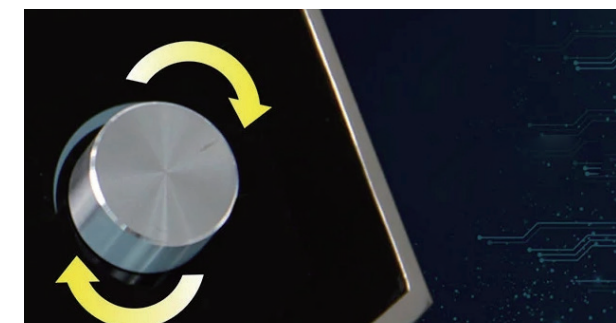
Powerful Motor

Consistent torque at different speeds to meet the various filtration needs



Digital Current Control

Digital current control to realize stable speed and excellent running performance



Digital Pulse Knob

Sterility Test Pump

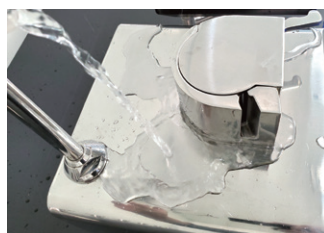
HTY-602S

- + Resistant to gas decontamination in isolator
- + Compact design frees working space in isolator
- + Fully water-proof design
- + Safety hood to avoid glove pinching
- + Safety protection of over current, over voltage, over load and block

- Easy tube loading
- Touch control
- Support 4-speed preset
- Fit for other brand canisters



Easy tube loading



Resistant to gas decontamination



Waterproof and dustproof interface



Suitable for using in isolator

Technical Parameters

Power: AC220V/50HZ,65W	Net Weight: 13kg	Bottle Holder Height: 43cm
Speed: 15-300rpm	Dimensions: 23.0x31.0x11.5cm	Material: Stainless Steel

Sterility Test Pump

HTY-APL01/02



- + Glass touch panel
- + Easy tube loading
- + Two pressure modes: Normal /*Pressure Alert Mode
- + Speed memory
- + Digital pulse knob
- + Safety hood to avoid glove pinching
- + Water- proof pedal switch
- + Safety protection of over current, over voltage, over load and block

*Pressure alert mode is for Tailin canisters, it will alert the operator and automatically reduces the pump speed till to pressure returns to normal.

Technical Parameters

Power : AC220V/50-60Hz,90W	Bottle Hold Height: 43cm
Speed: 15-300pm	Dimensions: 22.5x40.0x11.2cm
Net Weight: 16kg	Material: Stainless Steel

HTY-602A



- + Glass touch panel
- + Speed memory
- + Water-proof pedal switch
- + Safety hood to avoid glove pinching
- + Safety protection of over current, over voltage, over load and block

- Colorful LCD screen
- Temperature display
- Digital pulse speed knob
- Pre-set 4 speed for one-click starting

Technical Parameters

Power : AC220V/50-60Hz,65W	Bottle Holder Height: 43cm
Speed: 15-300pm	Dimensions: 23.0x31.0x11.0cm
Net Weight: 11kg	Material: Stainless Steel

Sterility Test Pump

HTY-601



- + Minimalist design frees working space
- + Mirror polished stainless steel easy to clean
- + Safety hood to avoid glove pinching
- + Most economical choice

- Small
- Economical
- One button start/stop
- Suitable for LVP samples

Technical Parameters

Power : AC95-260V/50-60Hz,60W	Bottle Holder Height: 43cm
Speed: 15-300pm	Dimensions: 22.5x34.0x10.5cm
Net Weight: 11.5kg	Material: Stainless Steel

Built-in Sterility Test Pump for Isolator

HTY-ASL01 ISO/02 ISO



- + Embedded design to minimize space occupancy
- + Easy tube loading and fit for other brands canisters
- + Two pressure mode: Normal/**Pressure Alert
- + SOP function: store up to 300 test recipes
- + Powerful motor with digital current control technology
- + Speed memory function
- + Safety hood to avoid glove pinching
- + Water-proof pedal switch
- + Safety protection of over current, over voltage, over load and block

* The pressure alert mode is for Tailin canisters, it will alert the operator and automatically reduces the pump speed till to pressure returns to normal.

Technical Parameters

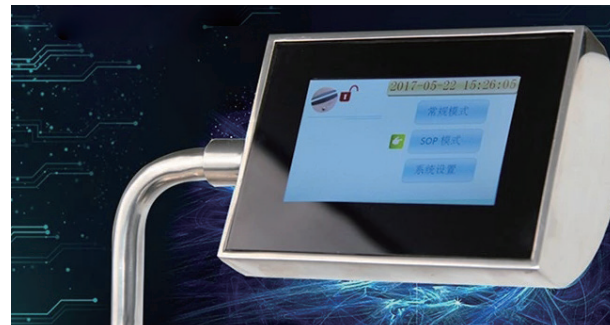
Power : AC95-260V/50-60Hz,120W	Test Recipes: Up to 300 groups
Screen: 4.3" colorful LCD	Speed: 1-300pm
Ambient Temperature: 15~35°C	Timer: 1-999S
Ambient RH: Below 75%	Bottle Holder Height: 33cm
Net Weight: 19kg	Material: Stainless Steels

Built-in Sterility Test Pump for Isolator



Designed for Sterility Test Isolator

Compact design frees the working space



SOP Mode

It can store up to 300 groups of test recipes



Water-proof

Water-proof glass panel is easy to clean

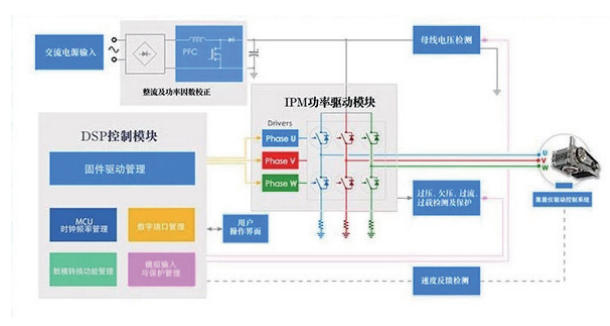


Digital Pulse Knob

Speed knob designed to be operated with isolator gloves



Easy Tube Loading, Pump Locked Automatically



Digital Current Control

Digital current control to realize stable speed and excellent running performance

Built-in Sterility Test Pump for Isolator

HTY-APL06 ISO



- + Glass touch panel
- + Easy tube loading
- + Two pressure modes: Normal /*Pressure Alert Mode
- + Speed memory
- + Digital pulse knob
- + Safety hood to avoid glove pinching
- + Water-proof pedal switch
- + Safety protection of over current, over voltage, over load and block

*Pressure alert mode is for Tailin canisters, it will alert the operator and automatically reduces the pump speed till to pressure returns to normal.

Technical Parameters

Power: AC220V/50-60Hz,90W	Bottle Hold Height: 33cm
Speed: 1-300pm	Dimensions: 23.0x30.5x1.0cm (Not incl. the sunken part)
Net Weight: 18kg	Material: Stainless Steel

HTY-602 ISO



- + Easy tube loading
- + Preset 3 commonly used speed
- + Glass touch panel
- + Compact design frees working space in isolator
- + Safety hood to avoid glove pinching
- + Safety protection of over current, over voltage, over load and block

Technical Parameters

Power: AC220V/50-60Hz,65W	Bottle Hold Height: 33cm
Speed: 15-300pm	Dimensions: 23.0x30.5x1.0cm (Not incl. the sunken part)
Net Weight: 16kg	Material: Stainless Steel

Sterility Test Canister



Double layer package for easy use in clean room

Double layer package to reduce the surface disinfection workload and the contamination risk. Good quality dialysis material to ensure both the package integrity and sterile condition.



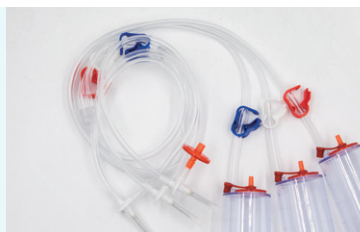
Pop-up cap with lanyard

A newly designed cap with a lanyard, the cap pops up when there is excess pressure inside and the cap is never missed during the testing process.



Pre-installed clamps for easy operation

Although the clamps are small parts, they have passed stringent tests including flow distribution, open and close test, sterilization resistance test, impact test, etc.



- + Ultrasonic welding process for best sealing performance and high-pressure resistance
- + High quality composite tubing with long-lasting tensile, wear, and pressure resistance to ensure trouble-free large-volume filtration
- + Pre-sterilized by EO or irradiation following European CE and international standards to ensure sterile performance
- + Bacterial challenge test, microbial growth recovery, and sterility test to ensure authentic and reliable sterility test results

Sterility Test of Small Volume Samples

Small doses are packaged in vials, some of which are less than 5 mm in diameter, and the rubber stoppers are even smaller. Traditional sterility testing methods may involve the following risks:

1. The use of syringes for dissolution and transfer, with high volumes of manipulation, repeated needle punctures, high risk of contamination, and difficulty in ensuring the integrity of the vial stopper.
2. The use of a single-hole needle adapter, where the sample is forcibly withdrawn from the vials without auxiliary air, the build-up of negative pressure upstream can affect the integrity of the filtration membrane, and there is also some risk of contamination due to the rapid replenishment of air and the negative pressure in the line as the needle is pulled out.
3. Forced piercing of the stopper with a conventional needle will result in deformation of the needle, affecting subsequent operations, and has a high probability of dislocating the stopper and damaging the integrity of the vials, increasing the risk of contamination.



A newly designed needle with an outer diameter of only 2.0 mm easily pierces the vial stopper without compromising the integrity of the stopper and vial mouth. The length of the needle has been optimized to reduce the amount of liquid left in the vial and to avoid uneven distribution of the sample in the vial.

Liquid sample in small vial

For liquid samples in a small vial, the DGB206 canister is recommended. Pierce the specially designed needle into the vial, start the pump, and pump all the samples to be tested in the container in turn (pausing to avoid inhaling air when changing vials. If the total volume of a batch of samples is less than 100 ml, it is recommended to dilute them appropriately before filtration), and then filtered them to achieve uniform sample distribution in the vials.



Powder sample in small vial

The NKFX220 canister is recommended for powder samples in small vials. It adopts a three-needle adapter, and the middle needle is designed for a small vial. Pierce the needles in the vial, start the pump, and invert the dissolution liquid bottle, transferring the diluted liquid to the closed container for the next filtration.

Sterility Test Canister

Ordering Information

Applications		EO Pre-Sterilized		Irradiation Pre-Sterilized
		Pouch Package	Blister Box Package	Pouch Package
LVP in Bottle	Without Antibiotics	PY2202	-	PY2202D*
		PY220	B-PY220	PY220D
	Contain Antibiotics	KSF220	B-KSF220	KSF220D
Liquid in Ampoule	Without Antibiotics	APY220-P* <i>(for oily product)</i>	-	-
		APY220	B-APY220	APY220D
	Contain Antibiotics	APY220	B-APY220	APY220D
Powder in Vial	Without Antibiotics	DGB220	B-DGB220	DGB220D
	Contain Antibiotics	KDGB220	B-KDGB220	KDGB220D
Powder in Ampoule	Without Antibiotics	DGA220	-	DGA220D
	Contain Antibiotics	KDGA220	-	KDGA220D
Difficult Soluble Powder in a Vial, With Antibiotics		NKF220	B-NKF220	NKF220D
LVP in Collapsible Bag		SDY220	B-SDY220	SDY220D
Medical Instrument with <i>Male Luer Connector</i>		YLQ220	-	YLQ220D
Medical Instrument with <i>Female Luer Connector</i>		YLX220*	-	YLX220D*
Viscous Liquid (biological products)		CN220	B-CN220	CN220D
Lyophilized Powder for Injection (biological products)		DCN220	-	DCN220D
Pre-filled Syringe		PFS2*	-	PFS2D*
Emulsion or Hard Filtrating Aqueous Samples		-	EVS2	-

Rapid Sterility Test System

Innovative Technology: Canister with Color Indicator



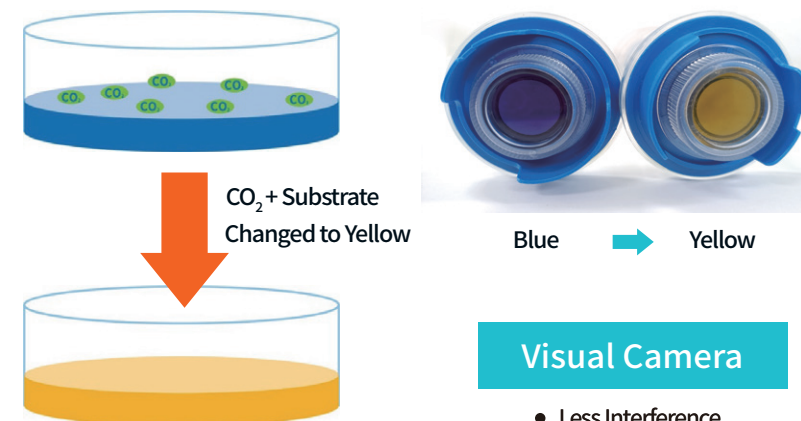
RST Series of Canister



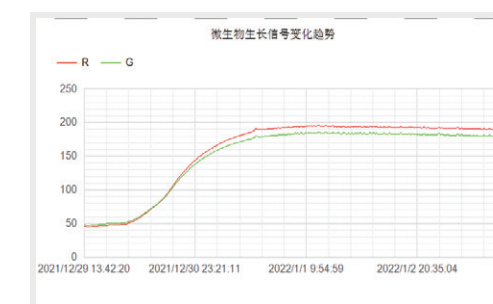
Automated Incubation and Digital Image Analysis Station

Principle

RST series of canisters adopt innovative color sensing technology. The microbial growth signal is quickly recognized by a CO₂ sensor at the bottom of the canister and is converted into a microbial growth signal by a digital camera scanning the image for color change and automated interpretation.



- Less Interference
- High Sensitivity



Color changes correspond to microbial growth signals

Accessories

Lab Vibrator HTY-VS01

The HTY-VS01 is used to shake the canister during sterility testing of antibiotic drugs to accelerate dissolution. It can reduce adsorption, improve the effect of filtration membrane flushing and avoid false negative results.

- + Fully enclosed design, resistant to gas decontamination
- + Digital display with one-touch start/stop
- + Adjustable shaking speed with timer function
- + Tempered glass touch panel
- + Suction cup base to prevent movement during operation



Technical Parameters

Power : AC95-260V/50-60Hz,25W	Timing: 1-99 min. or continuous running	Size: 17.0x18.0x15.5cm
Vibration Frequency: ≥ 28 Hz	RMS Amplitude: ≥ 0.1 mm	Net Weight: 6kg

Canister Stand



- + Made of 316L stainless steel
- + Patented openings for reliable fixation
- + Specially designed handle for easy handling and simple operation
- + Stackable design to save space

10 holes : 31.5x12.0x2.0 (5.0) cm

20 holes : 31.5x23.0x2.0 (5.0) cm

Lactamases



Penicillinase

Penicillinases are defined as a group of enzymes with varying specificity for hydrolysis beta-lactam compounds. The enzyme activity can reach 5 million units/mL which is superior to the conventional Penicillinase from *Bacillus cereus*.

- + Effective hydrolysis of beta-lactam antibiotics, including penicillin G, ampicillin, amoxicillin, pimecillin, carbenicillin, ticarcillin, furocillin, meloxicillin, cephalixin generation, etc.

Product	Physical Form	Pack Size	Activity
Penicillinase	Liquid	3mL	≥ 15 million IU/vial
Penicillinase	Liquid	5mL	≥ 15 million IU/vial

Cephalosporinase

Cephalosporinase is used to inactivate almost all current cephalosporins. Inactivate cephalosporin antibiotics, including: cefadroxil, cefradine, cephalixin.

- + Used for the sterility testing of cephalosporin raw materials and injectable cephalosporin drugs.
- + Used for the microbial limit test of oral and other cephalosporin antibiotics.

Product	Physical Form	Pack Size	Activity
Cephalosporinase	Liquid	7mL	≥ 2 million IU/vial
Cephalosporinase	Liquid	5mL	≥ 2 million IU/vial
Cephalosporinase	Powder	-	≥ 2 million IU/vial

Lactamases

Metallo Enzyme

Metalloenzymes are β -lactamases and are used to inactivate carbapenem (penicillin) antibiotics with better results than penicillinase.

- + It can effectively inactivate the beta-lactam antibiotics especially carbapenems
- + Used for the sterility test of β -lactam antibiotics raw materials and injectable drugs
- + Used for the microbial limit test of oral and other β -lactam antibiotics

Product	Physical Form	Pack Size	Activity
Metallo enzyme	Lyophilized powder	-	≥ 2 million IU/vial

Glucocerebrosidase

Glycopeptidase inactivates vancomycin and teicoplanin by opening the amide bond, mainly through the purified protein of the recombinant gene, so that it loses the antibacterial properties of the antibiotic.

- + It can effectively inactivates vancomycin, teicoplanin
- + Used for the sterility test of vancomycin and teicoplanin injectables
- + Used for the microbial limit test of vancomycin and teicoplanin oral drugs

Product	Physical Form	Pack Size	Activity
Glycopeptidase	Lyophilized powder	-	≥ 100 IU/vial

Lactamases

Macrocyclic Lactonase

Macrocyclic Lactonase is a genetically modified recombinant protein, water soluble, with a molecular weight of around 70,000. The principle is to inactivate the antimicrobial properties of macrolides.

- + It can effectively inactivates macrolide antibiotics
- + Used for sterility test of macrolide antibiotics injectables
- + Used for microbial limit test of oral and other macrolide antibiotics

Product	Physical Form	Pack Size	Activity
Macrocyclic Lactonase	Lyophilized powder	-	≥ 10 IU/vial

How to Use



- +Liquid: Each vial is used directly for sterility test
- + Lyophilized Powder: Each vial is dissolved in 5mL of sterile water and used for the sterility test
- + Storage: It is recommended to store the product desiccated at 2–10°C
- + The product as supplied is stable for 12 months when stored properly
- +Package: 10 vials/box



Microbial Limit Test System

1. Microbial Limit Tester
2. Microbial Limit Test Manifold
3. Laboratory Pumps
4. Microbial Limit Test Funnels
5. Membrane Filters
6. Membrane Dispenser
7. Sterile Vacuum Filter Unit
8. Automatic Colony Counter

Microbial Limit Test System



Microbial limit testing in the pharmaceutical industry is a highly regulated and complex area. With decades of experience, Tailin offers you an easy-to-use system with excellent service.

Tailin's microbial limit testing system is based on the membrane filtration method and consists of a range of instruments and consumables such as microbial limit testers/manifolds, vacuum/diaphragm pumps, funnels, filter membranes, membrane dispensers, automatic colony counters, etc.

The system complies with EP, USP, ChP, GMP, and ISO7704 requirements.

How to Use

A complete microbial limit test system consists of

- Option 1: Microbial Limit Tester + Funnels + Membrane Filter
- Option 2: Microbial Limit Test Manifold + Laboratory Pumps + Funnels + Membrane Filter

When using Tailin's microbial limit test system, there are flexible product combinations available.

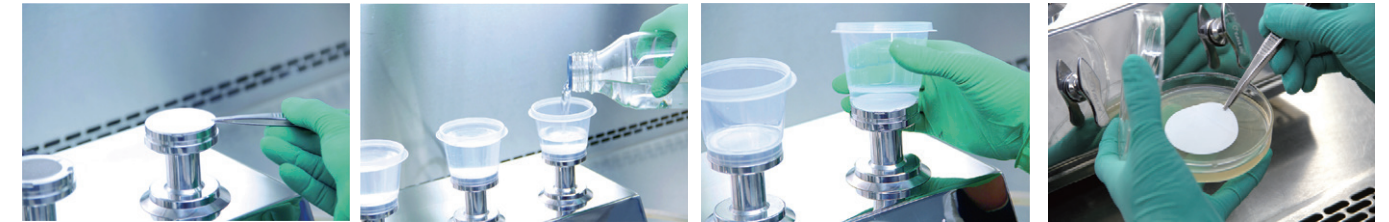
Combinations	Microbial Limit Testers (Built-in Pumps)	Microbial Limit Test Manifold	Laboratory Pumps	Filter Unit	Funnels	Membrane Filters
Option 1	HTY-310/ HTY-305SP/HTY-302/ HTY-102S	N/A	N/A	S60 F47BP-1001	N/A	N/A
Option 2	HTY-310/ HTY-305SP/HTY-302 /HTY-102S	N/A	N/A	N/A	F47BM/F47BN F47/F60	N/A
Option 3	N/A	HTY-30X series	HTY-30A (Vacuum Pump) HTY-30B (Diaphragm Pump)	S60 F47BP-1001	N/A	N/A
Option 4	N/A	HTY-30X series	HTY-30A (Vacuum Pump) HTY-30B (Diaphragm Pump)	N/A	F47BM/F47BN F47/F60	YES

*Accessories can help you optimise your microbial limit testing workflow

1. Automatic Membrane Dispenser HTY-EMD01
2. Automatic Colony Counter ASC-2000

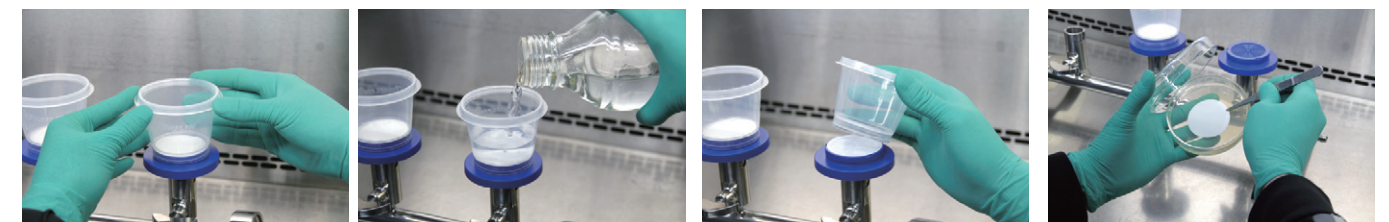
Microbial Limit Test System

F47/F60 Funnel



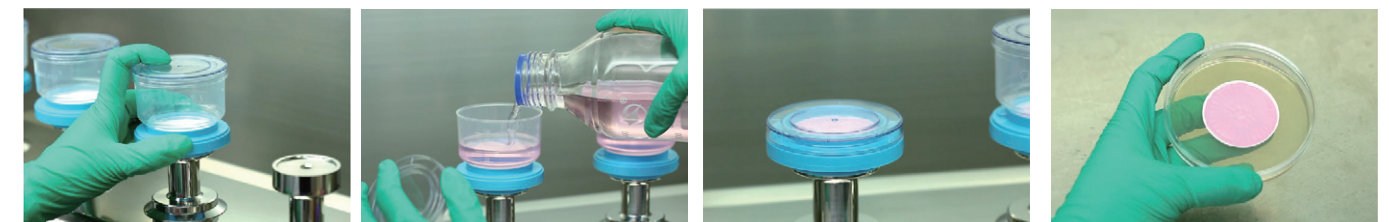
1. Place the membrane filter.
2. Install the funnel, add the testing sample, and start filtering.
3. Remove the funnel.
4. Incubate and count.

F47BM/F47BN Funnel



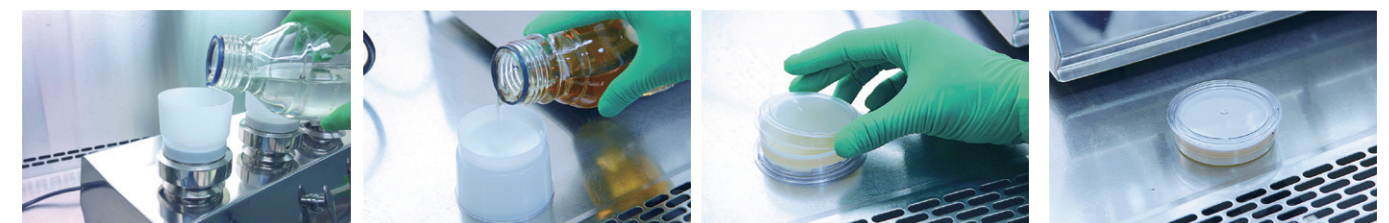
1. Install the funnel.
2. Add the testing sample, and start filtering.
3. Remove the funnel.
4. Incubate and count.

F47BP-1001 Funnel



1. Install the funnel.
2. Add the testing sample, and start filtering.
3. Option 1 Add liquid medium to form a Petri dish without removing membranes and filtering.
4. Option 2 Transfer the membrane, incubate and count.

S60 Filtration Funnel



1. Install the funnel and filtering sample.
2. Reverse the funnel and fill in medium.
3. Put on the cover to form a petri dish.
4. Incubate and count.

Microbial Limit Tester

HTY-310

- + Color LCD screen with tempered glass touch panel
- + Built-in SIP automatic disinfection program
- + Countdown running function, different pump head can be set for different running times
- + Four types of pump heads can be freely selected
- + Pump heads can be moist heat sterilized at 121°C
- + Built-in diaphragm pump, direct drainage, no need for filter bottles
- + Built-in check valve to eliminate backflow and prevent contamination
- + Larger discharge port for a smoother drain



- Four pump heads
- SIP automatic disinfection
- High-performance diaphragm pump made in Europe
- Test results could be printed

Technical Parameters

Power: AC220V/50Hz,145W

Noise: ≤ 65dB(A)

Size: 50.0x26.0x12.0cm

Flow Rate: 1500mL/min

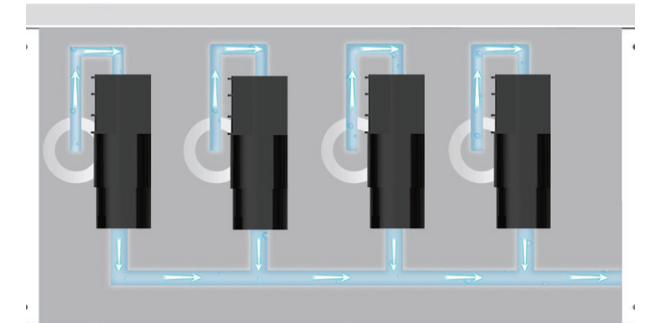
Type of Pump Heads: PF47,PB47, PF60, PS60

Consumables: S60 filtration funnel, F47, F60, F47B funnel with disc membrane filters

Microbial Limit Tester



Built-in Diaphragm Pump



SIP Automatic Disinfection Function



32-bit ARM Microcontrollers



Glass Touch Panel for Easy Operation



External Printer for Test Results Printing



Quick-fit Pump Heads Could Be Heat Sterilized

Microbial Limit Tester

HTY-305 SP



- + Three pump heads
- + Built-in diaphragm pump made in Europe, direct drainage, no need for filter bottles
- + Color LCD screen with tempered glass touch panel
- + Built-in SIP automatic disinfection program
- + Countdown running function, different pump head can be set for different running times
- + Four types of pump heads can be freely selected
- + Pump heads can be moist heat sterilized at 121°C
- + Equipped with check valve to prevent backflow and contamination
- + Larger discharge port for a smoother drainage

Technical Parameters

Power : AC220V/50Hz,135W	Noise: ≤ 65dB(A)
Size: 38.0x26.0x12.0cm	Flow Rate: 1500mL/min
Type of Pump Heads: PF47,PB47, PF60, PS60	
Consumables: S60 filter unit, F47, F60, F47B funnel with disc membrane filters.	

HTY-302



- + Suitable for the microbial limit test of viscous liquid samples
- + Three pump heads
- + Vacuum pump is built in and should be used together with a filter bottle for drainage
- + Four types of pump heads can be freely selected
- + Pump heads can be moist heat sterilized at 121°C
- + Each pump head can be in operation independently
- + Manual drainage

Technical Parameters

Power : AC220V/50Hz,30W	Noise: ≤ 65dB(A)
Size: 38.0x23.0x10.0cm	Flow Rate: 25 L/min(pumping flow)
Type of Pump Heads: PF47,PB47, PF60, PS60	
Consumables: S60 filter unit, F47, F60, F47B funnel with disc membrane filters	

Microbial Limit Tester

HTY-102S



- + Single pump head
- + Built-in SIP automatic disinfection program
- + Color LCD screen with tempered glass touch panel
- + Countdown running function, different pump head can be set for different running times
- + Four types of pump heads can be freely selected
- + Pump heads can be moist heat sterilized at 121°C
- + Built-in diaphragm pump, direct drainage, no need for filter bottles
- + Equipped with check valve to prevent backflow and contamination
- + Larger discharge port for a smoother drain

Technical Parameters

Power : AC220V/50Hz,60W	Noise: ≤ 65dB(A)
Size: 20.0x23.0x10.0cm	Flow Rate: 1500mL/min.
Type of Pump Heads: PF47,PB47, PF60, PS60	
Consumables: S60 filter unit, F47, F60, F47B funnel with disc membrane filters.	

Microbial Limit Test Manifold

HTY-305 Series



- + All stainless steel construction
- + All components can be disassembled for clean and steam sterilization
- + Four types of pump heads can be freely selected
- + Each pump head can be in operation independently
- + Used with the laboratory diaphragm pump or vacuum pump
- + One/three/six pump heads are available

Technical Parameters

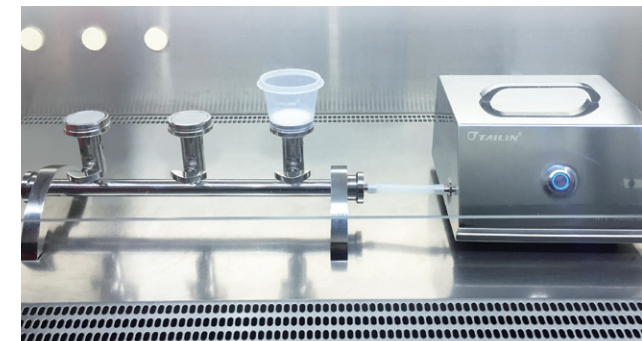
Model	Pump Heads		Consumables	Membranes	Laboratory Pumps
	Q'ty	Type			
HTY-301A/B/C	1	A: PF47A	A: F47 funnel	A: Ø47mm	HTY-30A Vacuum Pump HTY-30B Diaphragm Pump
HTY-303A/B/C	2	B: PF60A	B: F60 funnel	B: Ø60mm	
HTY-306A/B/C	3	C: PB47A	C: F47B funnel	C: Ø47mm	

Laboratory Pumps

HTY-30B



- + High performance diaphragm pump, no filter bottle required
- + Faster flow rate 5L/min
- + One button start /stop, easy to use
- + Compact and quiet
- + Used with the microbial test manifold, funnel and membrane filter to form the microbial test system



Technical Parameters

Power: AC220V/50Hz,60W	Noise: ≤ 60dB(A)
Size: 20.0x23.0x12.5cm	Flow Rate: 5L/min.
Net Weight: 5kgs	Material: Stainless Steel

HTY-30A



- + High-performance vacuum pump, and should be used together with a filter bottle for drainage
- + One button start /stop, easy to use
- + Used with the microbial test manifold, funnel and membrane filter to form the microbial



Technical Parameters

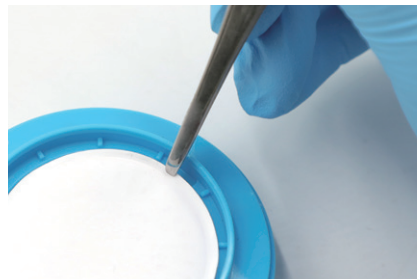
Power : AC220V/50Hz,30W	Noise: ≤ 65dB(A)
Size: 14.0x25.0x11.0cm	Flow Rate:25L/min.
Net Weight: 3kgs	Material: Stainless Steel
Vacuity: 30Kpa (absolute pressure); -70Kpa (relative pressure)	

Microbial Limit Test Funnels

F47BP-1001



Ready-to-use, once the sample has been filtered, the liquid medium can be added directly for incubation and counting without the need for additional agar and a Petri dish



Specially designed notch make membrane transfer easier



Pre-sterilized disposable base



Funnel with graduation marks, smooth surface to reduce liquid residue



The media absorbent pad locks in the media and provides sufficient nutrients



Stackable to save space

Microbial Limit Test Funnels

F47BM/F47BN



- + Pre-sterilized, 100mL or 250mL volume
- + Specially designed base to reduce the liquid residue
- + Specially designed notch make membrane transfer easier
- + Base, funnel and membrane filter can be selected separately
- + Disposable base with drainage hole to avoid contact with the pump head
- + Pump heads no need flame sterilization

Filtration Funnel S60



- + Ready-to-use, no need petri dish and tweezers
- + Sterile package
- + Integrated design, no need to transfer membrane
- + Perfect contact between the membrane and culture media

F47/F60



- + Sterile package
- + 100mL or 250mL volume



Microbial Limit Test System Summary

Summary

Device	Pump	Pump Heads	Funnels	Membrane Filters
HTY-310 HTY-305S HTY-302 HTY-102S	Built-in Pump	PF47	F47	Ø47 mm
			F47-R100	Ø47 mm
			F47-R250	Ø47 mm
		PF60	F60-R250	Ø60 mm
		PS60	S60	Integrated Ø60mm MCE
		PB47	F47BM (blue base, for drugs without antibiotics)	Integrated Ø47mm MCE
F47BN (red base, for drugs contain antibiotics)	Integrated Ø47mm Nylon			
F47BM-R250 (blue base)	Integrated Ø47mm MCE			
HTY-301A HTY-303A HTY-306A	HTY-30A (Vacuum Pump) HTY-30B (Diaphragm Pump)	PF47A	F47	Ø47 mm
			F47-R100	Ø47 mm
			F47-R250	Ø47 mm
HTY-301B HTY-303B HTY-306B		PF60A	F60-250	Ø60 mm
		PB47A	F47BM (blue base, for drugs without antibiotics)	Integrated Ø47mm MCE
			F47BN (red base, for drugs contain antibiotics)	Integrated Ø47mm Nylon
F47BM-R250 (blue base, for drugs without antibiotics)	Integrated Ø47mm MCE			
HTY-301C HTY-303C HTY-306C				

Membrane Filters



- + Wide range of membrane filters to meet different filtration needs
- + Uniform pore size and high porosity
- + Excellent flow rate
- + Gridded / Plain membrane for option
- + Sterile individual package or continuous package

Membrane Filters	Pore Size	Description	Diameter	Catalog No.	
MCE	0.45µm	Sterile, plain white	Ø47mm	1001	
			Ø50mm	1002	
			Ø60mm	1225	
		Sterile, white gridded	Ø47mm	G1001	
			Ø50mm	G1002	
			Ø60mm	G1225	
	0.8µm	Sterile, plain white, continuous package	Ø47mm	1233	
			Ø50mm	1234	
		Sterile, white gridded , continuous package	Ø47mm	G1233	
			Ø50mm	G1234	
		Sterile, plain white	Ø47mm	1323	
			Ø50mm	1324	
Sterile, white gridded	Ø47mm	G1323			
	Ø50mm	G1324			
Sterile, plain Black	Ø47mm	1323B			
	Ø50mm	1324B			
Sterile, gridded Black	Ø47mm	G1323B			
	Ø50mm	G1324B			
N66	0.45µm	Sterile, plain white	Ø47mm	2001	
			Ø50mm	2002	
			Ø60mm	2225	
	Sterile, plain white, continuous package	Ø47mm	2233		
		0.22µm	Sterile, plain white	Ø47mm	2123
				Ø50mm	2124
Ø60mm	2125				
PES	0.45µm	Sterile, plain white	Ø47mm	3223	
			Ø50mm	3224	
			Ø60mm	3225	
	0.22µm	Sterile, plain white	Ø47mm	3007	
			Ø50mm	3008	
			Ø60mm	3125	

Membrane Dispenser

HTY-EMD01



- + Built-in infrared sensor for no-touch dispensing
- + Easy loading of sterile membrane filter rolls
- + Compact size that saves space under the laminar airflow

Technical Parameters

Size: 25.0x17.0x26.0cm

Weight: 4.5kgs

Battery: 12V Li-ion

Main Construction: Stainless Steel

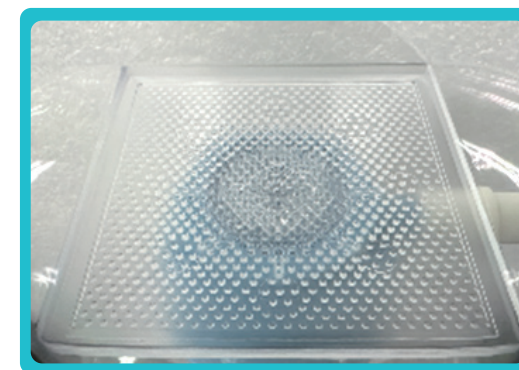
Sterile Vacuum Filter Unit



- + Free of pyrogens, DNase and RNase
- + Irradiation pre-sterilized
- + Square filter surface with more than 20% increase in filter area

- + Highly transparent material for easy observation
- + Third laboratory certified
- + Top filter and bottom collector bottle have graduation marks

- + Hose connector can fit multiple hose diameters



*High flow rate funnel design



Sterile bottle cap

Sterile Vacuum Filter Unit

Operation Guide



1. Remove the funnel and cap from the packaging.



2. Connect the vacuum pump tubing to the hose connector.



3. Add the solution to the funnel.



4. Start the vacuum pump for filtration.



5. After filtering, switch off the vacuum pump, turn the handle 45° to release the pressure and remove the pump tubing.



6. Unscrew the funnel and quickly fix the cap on the bottle.

Sterile Vacuum Filter Unit

Ordering Information

Membranes and Pore Size	Volume	Catalog No.
PES 0.22μm	150ml	VFP2200150
	200ml	VFP2200250
	500ml	VFP2200500
	1000ml	VFP2201000
PVDF 0.22μm	150ml	VFV2200150
	200ml	VFV2200250
	500ml	VFV2200500
	1000ml	VFV2201000
MCE 0.22μm	150ml	VFM2200150
	200ml	VFM2200250
	500ml	VFM2200500
	1000ml	VFM2201000
NYLON 0.22μm	150ml	VFN2200150
	200ml	VFN2200250
	500ml	VFN2200500
	1000ml	VFN2201000

Automatic Colony Counter

ASC-2000

- + "Zero-click" operation: automatically recognize the counting area, instant shooting
- + Convenient operation: simple and clear system interface
- + Quick counting: 1000 cfu per second
- + Results high accuracy: internal and adherent areas of the culture dish are all counted
- + Use the watershed algorithm to segment fusion colonies to ensure accurate results
- + Flexible design: suitable for multi-size, different models of petri dishes
- + Sterilization function: UV disinfection and sterilization to avoid cross-contamination
- + Scan recording: supports QR code or barcode recording
- + Ultra-high definition camera: 20 million pixels

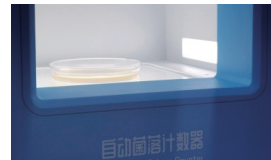


Digital Imaging System



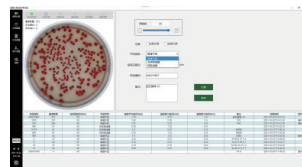
- + 12 million pixel lens
- + 1.1" large target surface, wide field of view(150*150mm)
- + Counting for Multi-size culture dishes
- + SONY IMX183 series CMOS
- + 20 million pixel color high-definition camera
- + 1" photosensor, clearer shooting, and more abundant details

Lighting System



The bottom backlight and the left and right side light sources are arranged with high-density LEDs, matched with a nano-level diffuse reflector, the light is soft, and the colonies from the center to the edge can be uniformly illuminated to high-light the outline.

Colony Counting System



- + English version, user-friendly software interface
- + Two modes for selection: petri dish with membrane and normal petri dish, to satisfy most using situations
- + Advanced image processing algorithm: better determining, segmenting and counting of the colony
- + Can connected with LIMIS system
- + Comply with 21 CFR Part 11 requirements
- + Result traceability: photo storage in the computer
- + Result export: pdf, jpg, bmp, png, excel

Closed Chamber for Petri Dish

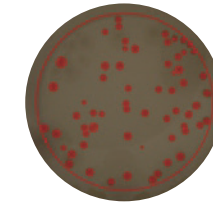


- + Simple metal chassis
- + Drop-down hovering board in the chamber to effectively block the interference of ambient light and ensure the imaging effect
- + In-built 254nm UV lamp, can kill the internal contaminated colonies and meet the needs of UV mutagenesis of special bacteria
- + Pulling down the hovering board can effectively block UV rays to ensure safe use

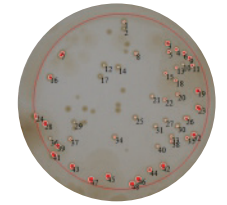
Automatic Colony Counter

Optimization Analysis Algorithm for Petri Dish with Membrane

The colony recognition algorithm designed for the petri dish with membrane can accurately segment and count the shallow colonies on the membrane.



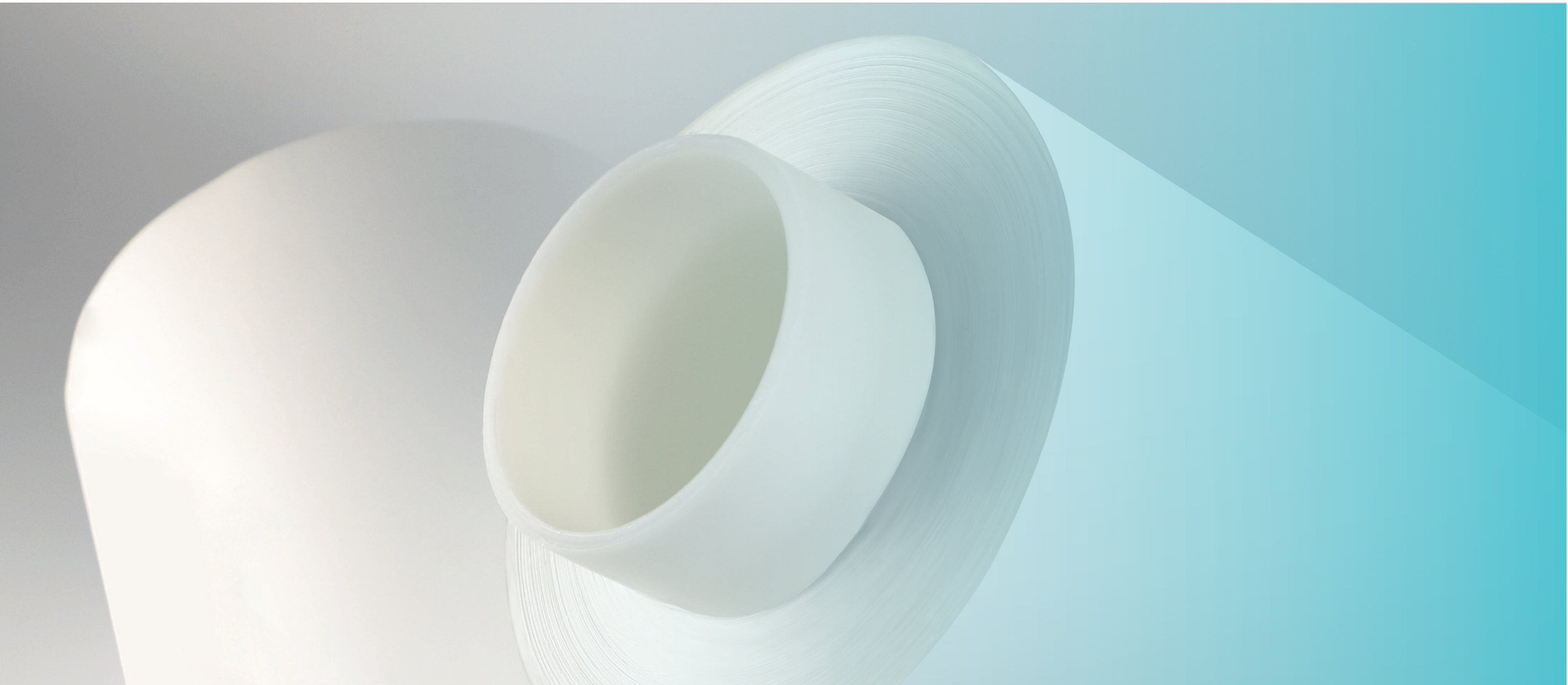
ASC-2000



other brands

Parameters

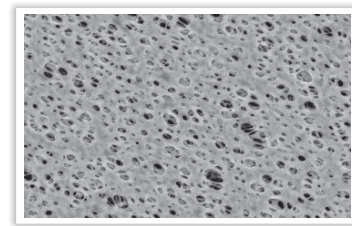
Function	X brand	I brand	ASC-2000
'Zero-click' complete automatic calculation	X	X	✓
Code scanning	X	✓	✓
Recognizing petri dish automatically	X	✓	✓
Recognizing calculating area automatically	X	✓	✓
Switch between Calculation interface & colony interface	X	✓	✓
UV disinfection	✓	X	✓
Specific area exclusion	✓	✓	✓
Sensitivity adjustment	✓	✓	✓
Automation degree	Low	Low	High
Time consuming	Long	Long	Short
Software difficulty	Difficult	Difficult	Easy
Camera pixel	2000W, 1" photosensor	500W	2000W, 1" photosensor
Petri dish with membrane	Manual operation and selections	Manual selections	Auto calculation
Max. petri dish dimension	90mm	Round: 150mm Square: 120mm	Round: 150mm Square: 120mm
Software interface	Complex mode & interface, difficult to operate	Simple & user-friendly interface, easy to operate	Simple & user-friendly interface, easy to operate
Configuration	Machine and computer: Leno*4G storage, 512G hard disk, I3-10 generation processor, Integrated graphics, 19-inch screen	Only machine	Machine and computer: DELL-16G storage, 512G SSD +1T storage, I5-11 generation processor, MX330-2G Discrete graphics card, 23.8-inch screen



Filtration Membrane

1. PES Flat Membrane
2. Reinforced PES Flat Membrane
3. Nylon Flat Membrane
4. MCE Flat Membrane
5. Hydrophilic PVDF Flat membrane
6. Reinforced Hydrophilic PVDF Flat Membrane
7. Nitrocellulose (NC) Membrane IVD Series

PES Flat Membrane



PES membrane is natural hydrophilic, good wettability and asymmetric pore structure, so it has super high water throughput. PES membranes are known for their thermal stability, durability, and resistance to acidic and alkaline solutions. It shows very low protein adsorption and low extractable levels.

Features

- + High water flux
- + Unique asymmetric pore structure
- + Low protein adsorption and low extractable levels
- + High porosity and uniformity
- + High retention capacity
- + Broad chemical compatibility
- + Resistant to different sterilization methods such as autoclave, EO, and Gamma irradiation
- + Natural hydrophilic, good filtration efficiency with a high flow rate
- + Excellent inter and intra-lot consistency

Applications

Suitable for process filtration in food & beverage, pharmaceutical, semiconductor, laboratory filtration, and water treatment.

Sterile Filtration

General Filtration

IV Infusion

Bioburden Reduction Filtration

Biopharma

PES Flat Membrane

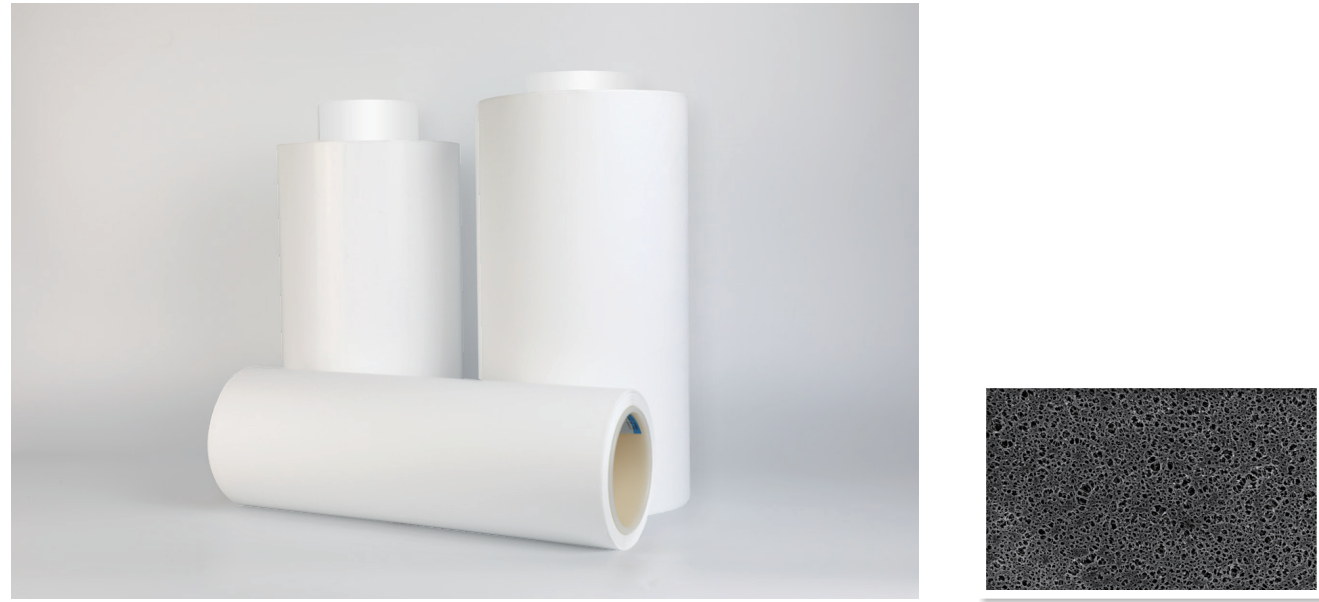
Specifications

Membrane	PES	PES	PES
Support Layer	NO	NO	NO
Pore Size	0.1μm	0.22μm	0.45μm
Bacteria Retention	N/A	LRV \geq 7 <small>(Brevundimonas adiminuta)</small>	LRV \geq 7 <small>(Serratia marescens)</small>
Bubble Point	\geq 0.185MPa (Anhydrous Ethanol)	0.37~0.56MPa (Purified Water)	0.25~0.35MPa (Purified Water)
Flow Rate	\geq 8.9mL/min/cm ²	\geq 15.6mL/min/cm ²	\geq 20.8mL/min/cm ²
Thickness	110~140μm	110~140μm	110~140μm

Ordering Information

Type	Pore Size	Code	Width (mm)	Length (mm)
PES	0.1μm	010	254/270	100/200
	0.22μm	022		
	0.45μm	045		
	0.65μm	065		
	0.8μm	080		
	1.2μm	120		
	3μm	300		
5μm	500			

Reinforced PES Flat Membrane



The Reinforced PES membrane is hydrophilic by nature. It casts the polyethersulfone onto the support layer, giving it excellent mechanical strength and easy thermal bonding. It has excellent heat resistance, acid and alkaline resistance, very low protein binding, and low extractability. Tailin 's reinforced PES membranes meet pharmaceutical-grade requirements. It uses a unique technology to achieve an optimized combination of retention efficiency and flux.

Features

- + Excellent mechanical strength
- + Unique asymmetric pore structure
- + Low protein binding and low extractability
- + High porosity and uniformity
- + Compatible with different sterilization methods such as autoclave, EO and Gamma irradiation
- + Natural hydrophilic, good filtration efficiency with a high flux
- + Consistent quality between batches
- + Broad chemical compatibility
- + Resistant to different sterilization methods such as autoclave, EO, and Gamma irradiation
- + Natural hydrophilic, good filtration efficiency with a high flow rate
- + Excellent inter and intra-lot consistency

Applications

Suitable for process filtration in food & beverage, pharmaceutical, semiconductor, laboratory filtration, and water treatment.

- Sterile Filtration
- IV Infusion Filter
- IV Drip Set
- Tangential Flow Filtration Cassettes

Reinforced PES Flat Membrane

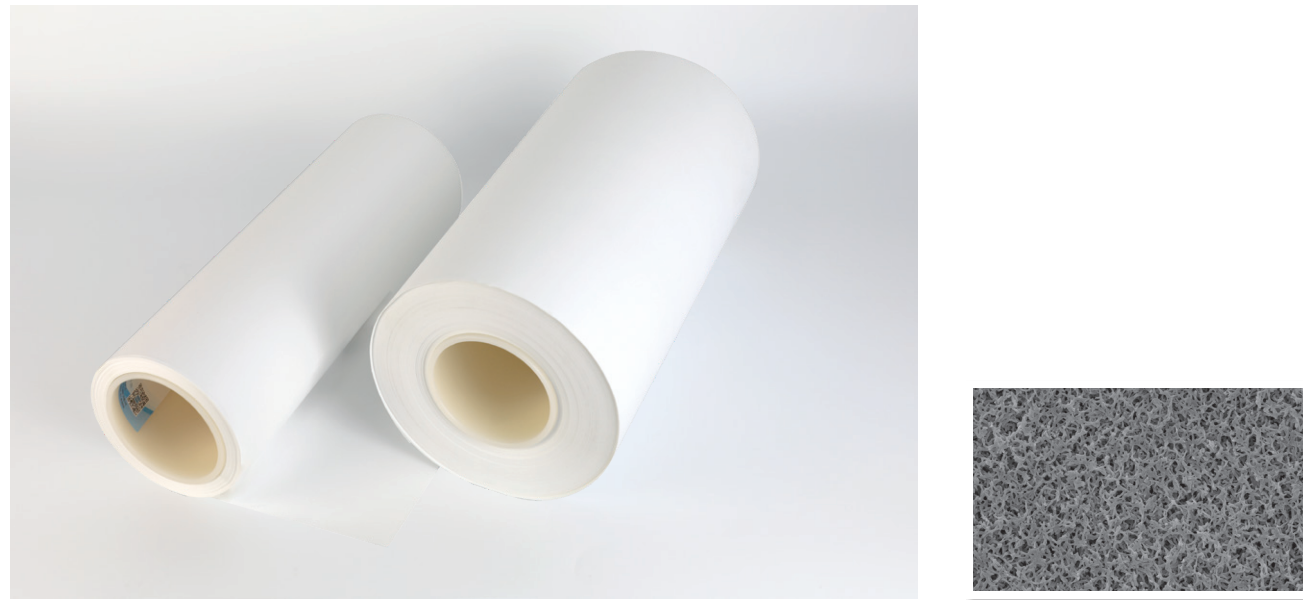
Specifications

Membrane	Supported PES	Supported PES
Support Layer	PET	PET
Pore Size	0.22µm	0.45µm
Bacteria Retention	LRV≥7 <small>(Brevundimonas diminuta)</small>	LRV≥7 <small>(Serratia marescens)</small>
Bubble Point	0.32~0.50MPa (purified water)	0.22~0.32MPa (purified water)
Flow Rate	≥13.9mL/min/cm ²	≥17.8mL/min/cm ²
Thickness	120~160µm	120~160µm

Ordering Information

Type	Pore Size	Code	Width (mm)	Length (mm)
TLPESB	0.1µm	010	254/270	100/200
	0.22µm	022		
	0.45µm	045		
	0.65µm	065		
	0.8µm	080		
	1.2µm	120		
	3µm	300		
5µm	500			

Nylon Flat Membrane



The nylon membrane is made of polyamide 66. It is hydrophilic in nature with good chemical compatibility. It can filter all water-based liquids and most organic solutions such as alcohols, hydrocarbons, ethers, esters, ketones, etc. The nylon membrane is widely used for sample collection, pre-filtration, sample testing and removal of particles, bacteria and micro-organisms.

Tailin's reinforced nylon membrane meets pharmaceutical grade requirements. PET is used as a support layer to increase mechanical strength. It has very low extractability and provides excellent flow diffusion.

Features

- + Naturally hydrophilic, high flow rate
- + Very low extractable, ensuring an accurate test result
- + Good resistance to heat, cold, and oil
- + Excellent mechanical strength
- + Resistant to various sterilization methods such as autoclave, EO, and gamma irradiation
- + Excellent inter and intra-lot consistency

Applications

Filtration applications in the medical, food & beverage, drinking water, microelectronics, fine chemicals, and laboratory industries.

- Laboratory applications: pre-filtration of samples and mobile phases. Food & Beverage: Removal of bacteria, micro-organisms, and contaminants.
- Water treatment: removal of suspended solids, colloids, etc.
- Pharmaceutical industry: removal of particles and bacteria.

Nylon Flat Membrane

Specifications

Membrane	Nylon	Nylon
Support Layer	PET	PET
Pore Size	0.22μm	0.45μm
Bacteria Retention	LRV \geq 7 <small>(Brevundimonas diminuta)</small>	LRV \geq 7 <small>(Serratia marescens)</small>
Bubble Point	0.32~0.45MPa	0.20~0.30MPa
Flow Rate	\geq 3.7mL/min/cm ²	\geq 11.8mL/min/cm ²
Thickness	90~130μm	90~130μm

Ordering Information

Type	Pore Size	Code	Width(mm)	Length(mm)
TLNYB	0.22μm	022	312	100/200
	0.45μm	045		
	0.65μm	065		
	0.8μm	080		
	1.2μm	120		
	3μm	300		
	5μm	500		

MCE Flat Membrane



MCE flat membranes are made from a mixture of cellulose nitrate and cellulose acetate, which can retain microorganisms and particles from fluids. They are widely used in aqueous solution sterile filtration, aqueous solution clarification, particle collection and analysis, microbial detection, air monitoring, mobile phase (aqueous phase) filtration for HPLC, etc.

Features

- + Good hydrophilicity and easy wetting
- + Smooth membrane surface, high porosity, good retention effect, suitable for microbial retention and growth
- + Uniform membrane pores, high porosity, high flow rate, and fast filtration
- + Excellent mechanical strength
- + Good thermal stability
- + Excellent inter and intra-lot consistency

Applications

MCE membranes are suitable for high flow rate, and high volume applications, mainly for sterilizing-grade filtration and microbiology testing of aqueous solutions.

- Microbiological Analysis
- HPLC sample preparation
- Particle counting in liquids or aerosols
- Sterilization and particle removal filtration in laboratories and small production processes
- Filtration of culture media, culture solutions for sterilization
- Determination of E. coli in water
- Determination of bacteria and particles in pharmaceuticals

MCE Flat Membrane

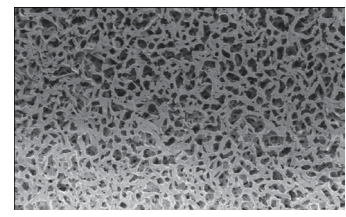
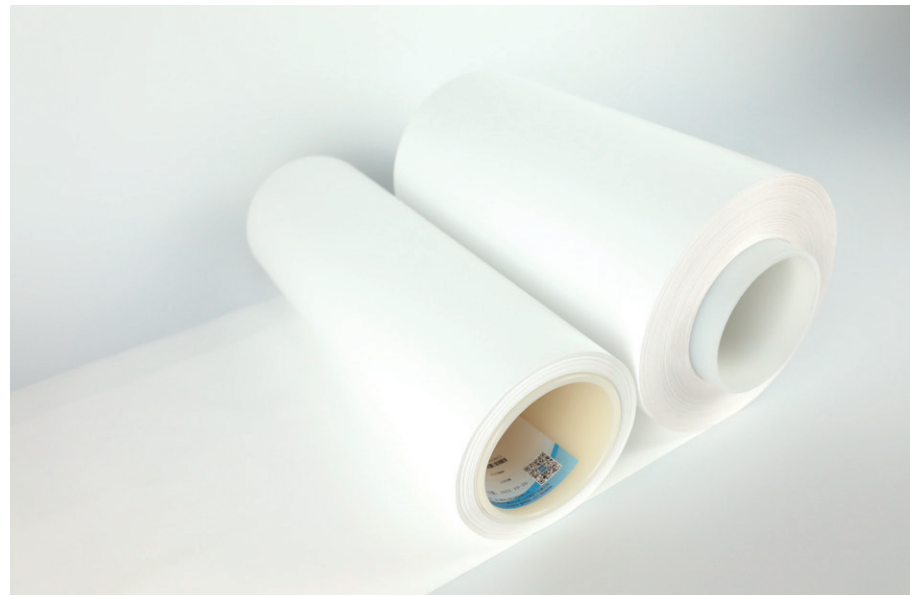
Specifications

Membrane	MCE	MCE
Support Layer	PET	PET
Pore Size	0.22μm	0.45μm
Bacteria Retention	LRV \geq 7 <small>(Brevundimonas diminuta)</small>	LRV \geq 7 <small>(Serratia marescens)</small>
Bubble Point	0.32~0.45MPa	0.185~0.28MPa
Flow Rate	\geq 6.2mL/min/cm ²	\geq 20.8mL/min/cm ²
Thickness	85~130μm	85~130μm

Ordering Information

Type	Pore Size	Code	Width(mm)	Length(mm)
TLMCEB	0.22μm	022	310	100/200
	0.45μm	045		
	0.65μm	065		
	0.8μm	080		
	1.2μm	120		
	3μm	300		
	5μm	500		

Hydrophilic PVDF Flat Membrane



Hydrophilic PVDF membranes are widely used for the filtration of culture media and other protein solutions due to their very low protein adsorption, high water flux, and broad chemical compatibility. Hydrophilic PVDF membranes have excellent heat and oxygen resistance and are also used for solvent filtration and chromatographic sample preparation.

Features

- + Excellent chemical compatibility
- + Very low protein retention
- + Excellent heat and oxidation resistance
- + Good mechanical strength
- + Good hydrophilicity
- + Resistant to different sterilization methods such as autoclave, EO, and Gamma irradiation
- + Excellent inter and intra-lot consistency

Applications

Suitable for filtration in the food & beverage, pharmaceutical, laboratory, and chemical industries.

General Filtration

Solvents Filtration

Sterile Filtration

Biopharma

Hydrophilic PVDF Flat Membrane

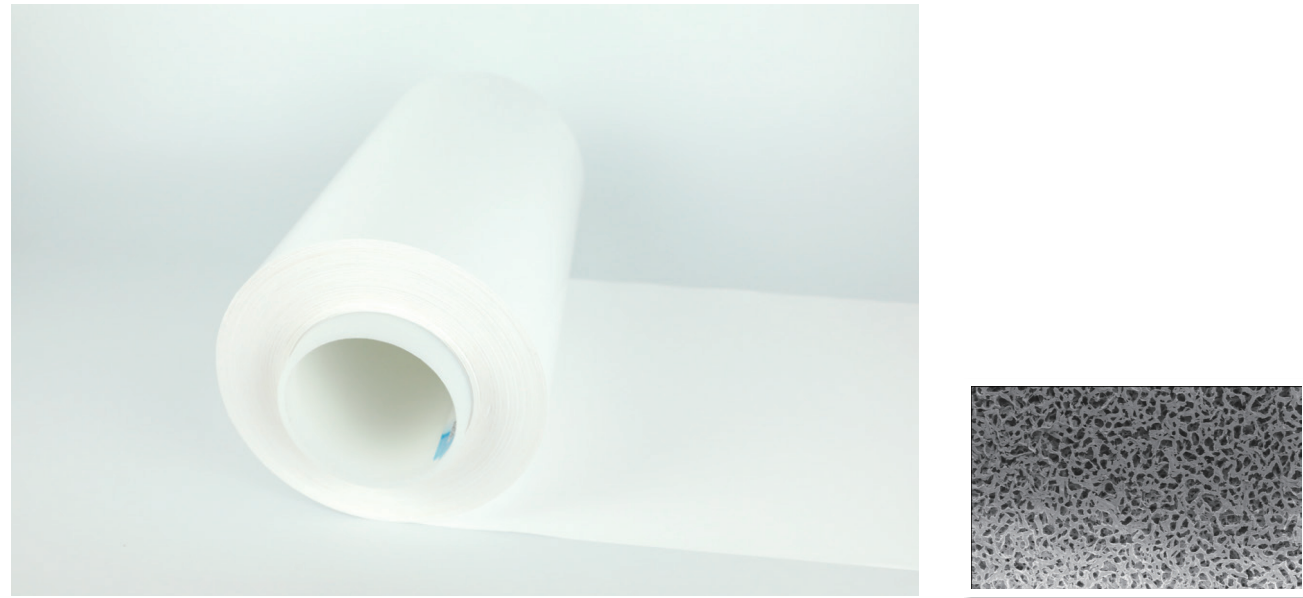
Specifications

Membrane	Hydrophilic PVDF	Hydrophilic PVDF	Hydrophilic PVDF
Support Layer	No	No	No
Pore Size	0.1μm	0.22μm	0.45μm
Bacteria Retention	N/A	LRV \geq 7 <small>(Brevundimonas diminuta)</small>	LRV \geq 7 <small>(Serratia marescens)</small>
Bubble Point	\geq 0.50MPa	\geq 0.330MPa	\geq 0.170MPa
Flow Rate	\geq 5mL/min/cm ²	\geq 9mL/min/cm ²	\geq 30mL/min/cm ²
Thickness	100~120μm	100~120μm	100~120μm

Ordering Information

Type	Pore Size	Code	Width(mm)	Length(mm)
TLPVDF	0.1μm	010	254/270	100/200
	0.22μm	022		
	0.45μm	045		
	0.65μm	065		
	0.8μm	080		
	1.2μm	120		
	3μm	300		
	5μm	500		

Reinforced Hydrophilic PVDF Flat Membrane



Reinforced hydrophilic PVDF membranes have a supported layer. They are widely used for the filtration of culture media and other protein solutions due to their very low protein adsorption, high water flux, and broad chemical compatibility. Hydrophilic PVDF membranes have excellent heat and oxygen resistance and are also used for solvent filtration and chromatographic sample preparation.

Features

- + Excellent chemical compatibility
- + Very low protein retention
- + Excellent heat and oxidation resistance
- + Superior mechanical strength
- + Good hydrophilicity
- + Resistant to different sterilization methods such as autoclave, EO, and Gamma irradiation
- + Excellent inter and intra-lot consistency

Applications

Suitable for filtration in the food & beverage, pharmaceutical, laboratory, and chemical industries.

General Filtration

Solvents Filtration

Sterile Filtration

Biopharma

Reinforced Hydrophilic PVDF Flat Membrane

Specifications

Membrane	Reinforced PVDF	Reinforced PVDF	Reinforced PVDF
Support Layer	PET	PET	PET
Pore Size	0.1µm	0.22µm	0.45µm
Bacteria Retention	N/A	LRV \geq 7 <small>(Brevundimonas diminuta)</small>	LRV \geq 7 <small>(Serratia marescens)</small>
Bubble Point	\geq 0.50MPa	\geq 0.280MPa	\geq 0.160MPa
Flow Rate	\geq 4mL/min/cm ²	\geq 10mL/min/cm ²	\geq 25mL/min/cm ²
Thickness	120~140µm	120~140µm	120~140µm

Ordering Information

Type	Pore Size	Code	Width (mm)	Length (Meters)
TLPVDFB	0.1µm	010	254/270mm	100/200mm
	0.22µm	022		
	0.45µm	045		
	0.65µm	065		
	0.8µm	080		
	1.2µm	120		
	3µm	300		
5µm	500			

Nitrocellulose (NC) Membrane IVD Series



The TLNC series of backed nitrocellulose membranes are specially designed for lateral flow immunoassays. It cast the cellulose nitrate solution on the clear polyester backing. It has excellent mechanical strength that will perfectly fit all diagnostic manufacturer production needs..

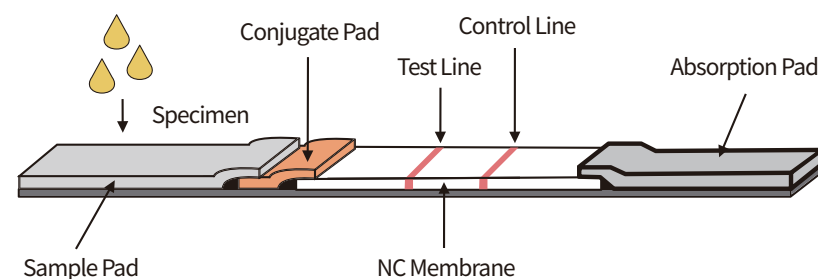
Features

- + Excellent chemical compatibility
- + Uniform pore structure
- + Excellent protein binding
- + Unique coding on each volume to ensure traceability

Applications

- + COVID-19 Rapid Test Kit
- + Pregnancy Test Kit
- + HbsAg Test Kit
- + Narcotics Identification Kit

Lateral Flow Immunoassay



Nitrocellulose (NC) Membrane IVD Series

Parameters	TLNC095B	TLNC120B	TLNC140B	TLNC180B
Membrane Material	Nitrocellulose	Nitrocellulose	Nitrocellulose	Nitrocellulose
Thickness(incl backing) [μm]	215~255	215~255	215~255	215~255
Capillary Speed CFT ¹ [s/40mm]	75~115	100~150	110~180	140~230
Pore Size[μm]	12	10	8	5
Backing	Polyester	Polyester	Polyester	Polyester
Protein Adsorption [μg BSA/cm ²]	28	28	28	28
Inner Dia of Reel Core[mm]	76.2	76.2	76.2	76.2
Reel Core Material	Polyethylene	Polyethylene	Polyethylene	Polyethylene
Width ³ [mm]	20/25	20/25	20/25	20/25
Length ³ [m]	50/100	50/100	50/100	50/100

1. Capillary speed could be customized according to actual needs. 2. Backing thickness could be customized. 3. The membranes width and length could be customized.

Catalog No.	Descriptions
TLNC095B20100	Nitrocellulose membrane with backing, 20mm X100m, 1 roll/box.
TLNC095B25100	Nitrocellulose membrane with backing, 25mm X100m, 1 roll/box.
TLNC120B20100	Nitrocellulose membrane with backing, 20mm X100m, 1 roll/box.
TLNC120B25100	Nitrocellulose membrane with backing, 25mm X100m, 1 roll/box.
TLNC140B20100	Nitrocellulose membrane with backing, 20mm X100m, 1 roll/box.
TLNC140B25100	Nitrocellulose membrane with backing, 25mm X100m, 1 roll/box.
TLNC180B20100	Nitrocellulose membrane with backing, 20mm X100m, 1 roll/box.
TLNC180B25100	Nitrocellulose membrane with backing, 25mm X100m, 1 roll/box.

Specifications subject to change without notice.



Pretreatment Instruments

1. Laboratory Blender
2. Gravimetric Diluter
3. Laboratory Homogenizer
4. Sterile Bags
5. Ampoule Opener
6. Aerosol-based Drug Sampler

Laboratory Blender/Gravimetric Diluter

Laboratory Blender HTY-763



- + High-speed motor, fast and workload reduced
- + One button start/stop
- + Unique design, no leakage
- + The mixing blade is integrated into the cup
- + Cup can be steam sterilized

Gravimetric Diluter HTY-ADS01



- + Large size LCD display
- + Glass touch panel
- + Automatic dilution, fast and accurate
- + Built-in calibration process to ensure accuracy

Technical Parameters

Weighing Range:0-1000g	Dilution Factor:1-999
Weighing Range:0-1000g	Dilution Accuracy:>98%
Max.Weighing without Bag Opener:0-2,000g	
Dilution Time:<15S (25g sample at 10x dilution).	
Dimensions(L*W*H):20.0x24.4x20.6cm	Weight:7.3kg
Distribution Mode:Proportionally/By weight/Hand gun	
Speed Mode:Fast /Standard	
Pump Selection:pump A/pump B / AB same liquid / AB different liquid	
Connections: RS232 printer,JACK1 hand gun, JACK2 foot switch	
Size:38.0x24.0x28.0cm	Weight: 13kg Power: AC220V 50HZ

Technical Parameters

Power Supply:AC220V/50Hz	Speed: 1,000-20,000 RPM
Cup Volume:300/500 mL	Power:400 W
Timing:1-300 seconds	Weight:7.3kg
Cup Material:Polymer / Stainless steel (optional)	
Size(L*W*H):20.0x24.4x20.6cm	

Laboratory Homogenizer

Laboratory Homogenizer HTY-BM01

User Friendly

- Colorful LCD screen
- Touch glass panel control
- Time and date display

Adjustable Parameters

Blending force, speed, time and disinfection time can be adjusted

Safe & Reliable

- Stops running when door is opened
- Built-in drip tray for leaks and spills
- Non-contact and leak-free

Easy Observation

Glass window with light in chamber

Easy Cleaning

- Fully opened door
- Removable paddles

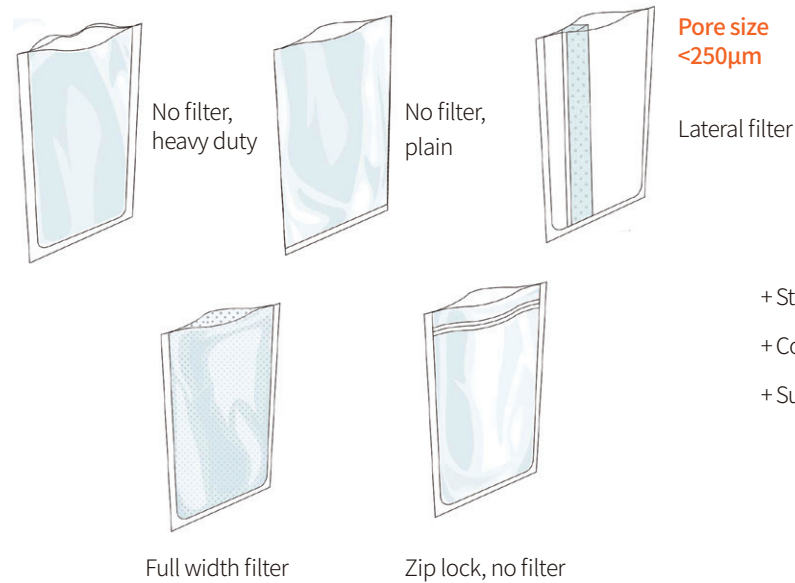


Technical Parameters

Capacity: 500-400 mL	Timing: 1 second-1 hour OR continuous run
Power: AC220V/50Hz, 500W	Blend Speed: 1-16 times/second
Weight: 30kg	Dimensions (L*W*H): 41.5x28.0x30.0cm

Sterile Bags

Sterile Bags



- + Sterile, no risk of cross-contamination between samples
- + Compatible with all laboratory homogenizers
- + Suitable for 1g to 400g samples

Bag Rack

- + Fit for 400mL bag
- + All stainless steel, robust and can be stacked
- + Can be steam sterilized
- + Size: 36.5*21.0*20.0cm
- + Drip tray is optional

Material: Nylon /LDPE Thickness: 70 μm



Type	W*H (mm)	Volume	Packaging
No filter, plain	180*300	400mL	25pcs* 20packs, 500pcs/Carton
Zip lock, no filter	190*320	400mL	25pcs* 20packs, 500pcs/Carton
Full width filter	190*300	400mL	50pcs* 10packs, 500pcs/Carton
Lateral filter	190*300	400mL	25pcs* 20packs, 1500pcs/Carton
No filter, heavy duty	190*300	400mL	25pcs* 20packs, 500pcs/Carton

Ampoule Opener/Aerosol-based Drug Sampler

Ampoule Opener HTY-ABK03



- + High- speed motor, fast and workload reduced
- + One button start/stop
- + Unique design, no leakage
- + The mixing blade is integrated into the cup
- + Cup can be steam sterilized

3 steps to open the ampoule

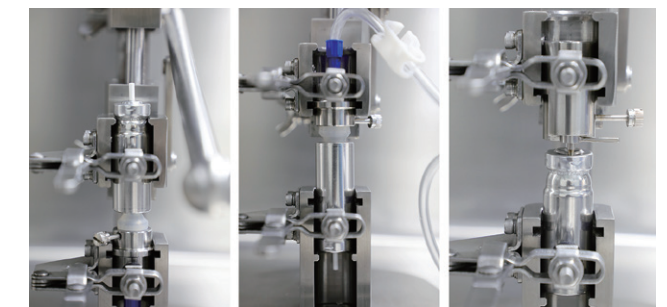


1. Insert the ampoule head into the jaws of the opener.
2. Move the ampoule gently along the blades.
3. Break and open the ampoule.

Aerosol-based Drug Sampler HTY-ACB03



- + Enclosed sampling to prevent leakage and external contamination
- + The sampling needle assembly is removable and resistant to heat sterilization
- + Adjustable clamp suitable for different size aerosol containers



Technical Parameters

Material: SS316L	Dimensions: 19.0x23.0x31.0cm
Handle Length: 27cm	Weight: 5kg
Consumables: KYLQ sterility test canisters	